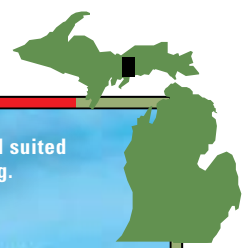


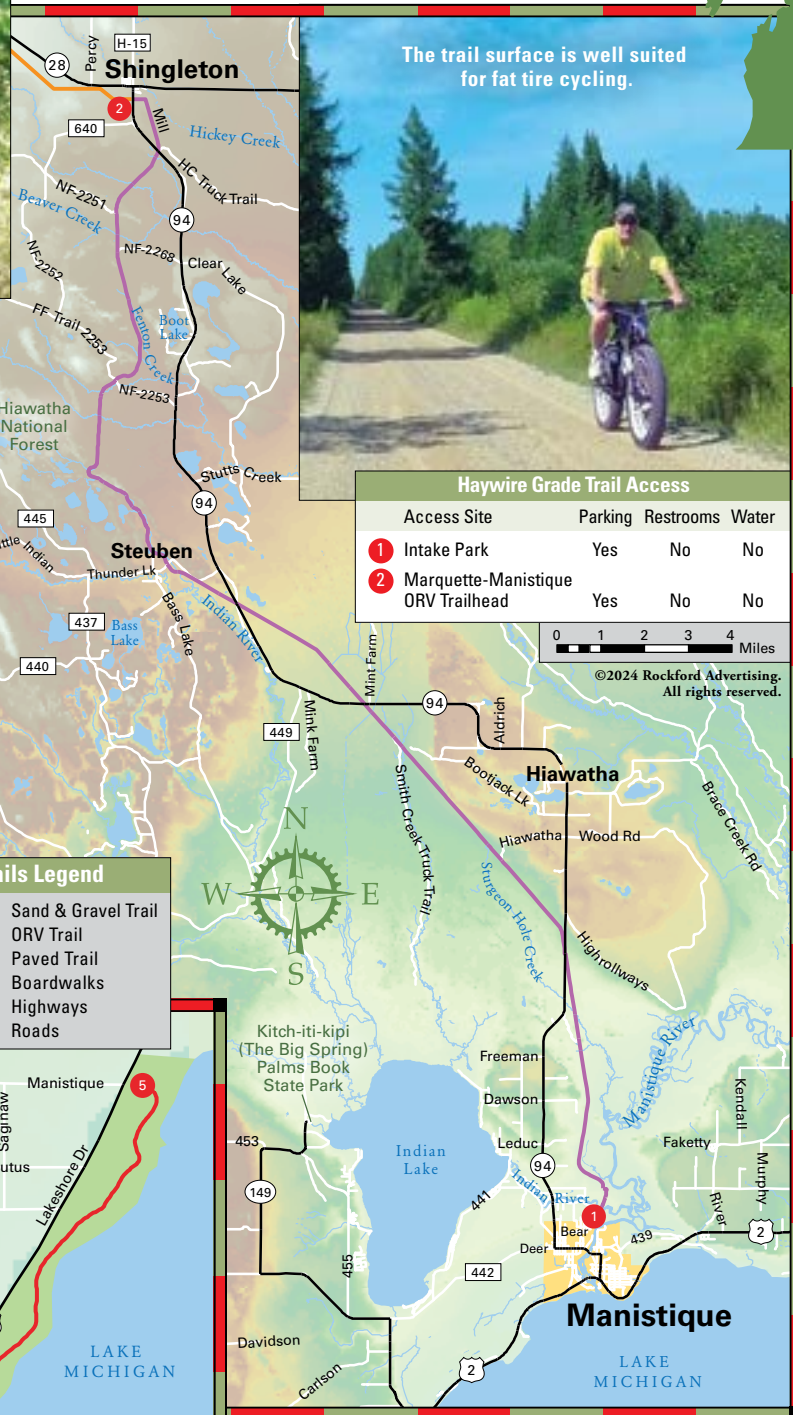
On the trail near Steuben.



## Haywire Grade Trail

Michigan's first rail trail, the Haywire Grade Trail travels 33 miles from Intake Park in Manistique to Shingleton on a former rail line. The original Manistique & Northwestern Railroad, known as the "Haywire Line," was completed in 1898 through a vast expanse of white pine forest, and became the Manistique & Lake Superior Railroad in 1909. The railway hauled timber from several logging camps along the line to five major lumber mills in the port city of Manistique. Converted into a recreation trail in 1970, the Haywire Grade Trail celebrated its 50th anniversary in 2020.

The trail surface received several improvements this past year and consists of a mix of gravel and coarse limestone, suitable for fat tire cycling, but primarily used by snowmobiles and ATVs. Mile markers help you track your progress through this secluded second growth forest. You'll find a small grocery store in the tiny hamlet of Steuben, the last vestige of the many logging camps or towns that vanished after the timber was depleted. A series of 11 interpretive kiosks along the trail tell the natural and cultural history of the area.



The trail surface is well suited for fat tire cycling.



### Haywire Grade Trail Access

Access Site	Parking	Restrooms	Water
1 Intake Park	Yes	No	No
2 Marquette-Manistique ORV Trailhead	Yes	No	No

0 1 2 3 4 Miles

©2024 Rockford Advertising. All rights reserved.

### Trails Legend

- Sand & Gravel Trail
- ORV Trail
- Paved Trail
- Boardwalks
- Highways
- Roads



### Manistique Boardwalk Trail Access

Access Site	Parking	Restrooms	Water
1 Manistique Boat Marina	Yes	Yes	Yes
2 Cedar Drive Parking	Yes	No	No
3 Lakeview Park West	Yes	Portable	No
4 Carl D. Bradley Park	Yes	Vault	No
5 Lakeview Park East	Yes	No	No

## Manistique Boardwalk

With close proximity to Kitch-iti-kipi (The Big Spring), Indian Lake and many lodging, dining, and recreational opportunities, the port city of Manistique is one of Michigan's great vacation destinations. During your stay, make sure to explore the Manistique Boardwalk. This 1.83-mile paved path and boardwalk follows along the edge of the Manistique harbor and Lake Michigan shoreline. Witness a glorious sunrise. Enjoy a day on the sandy beach. Hike to the lighthouse. Go for brisk run or leisurely walk. Interpretive signs tell the local history along the way.

Haywire Grade Trail • Manistique Boardwalk

